



bankruptcy analytics

Bankruptcy market analytics with the most comprehensive data-set for market intelligence updating daily and at your fingertips

epiq bankruptcy analytics

Filings

Open Cases

Closed Cases

Stakehol

Summary **Periods** Trends

Reset

Proceeding Type

Bankruptcy Adversary

Chapter

7 9 11 11(V)
12 13 15 All

Debtor Type

Individual Commercial

Period

All

Variable

Filings

Measure

Count

Interval

Monthly Annual

Filings Count

Selected Period Total

2014 to 2022

9,215,647

Full Month Average

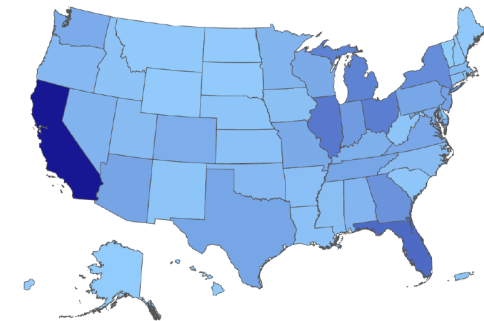
Jan 2007 to Dec 2022

45,175

Filings Count by State

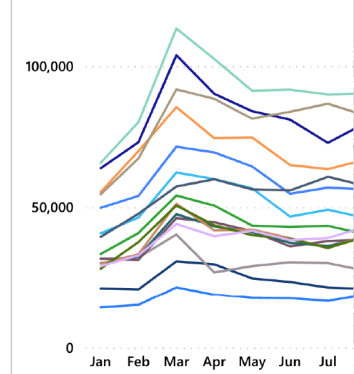
View by Court

All



State: All

Monthly Filings Count by Year



Proceeding Type: Bankruptcy | Chapter: 7 | Debtor Type: Individual | Period: All | Variable: Filings | Measure: Count | Interval: Monthly

The Future of Bankruptcy Data Access

Epiq Bankruptcy Analytics is a SaaS based self-service platform providing direct access to the industry's most comprehensive, accurate and timely bankruptcy information. The bankruptcy intelligence is being leveraged for forecasting, capacity planning, marketing decisions and more. Used by law firms, lenders, investors, servicers, court personnel, trustees, media and other organizations with vested interest in the bankruptcy market.

15+ million historical bankruptcies and adversarial proceedings from 2007 and updated daily. There are four major lenses into the database for new and historical:

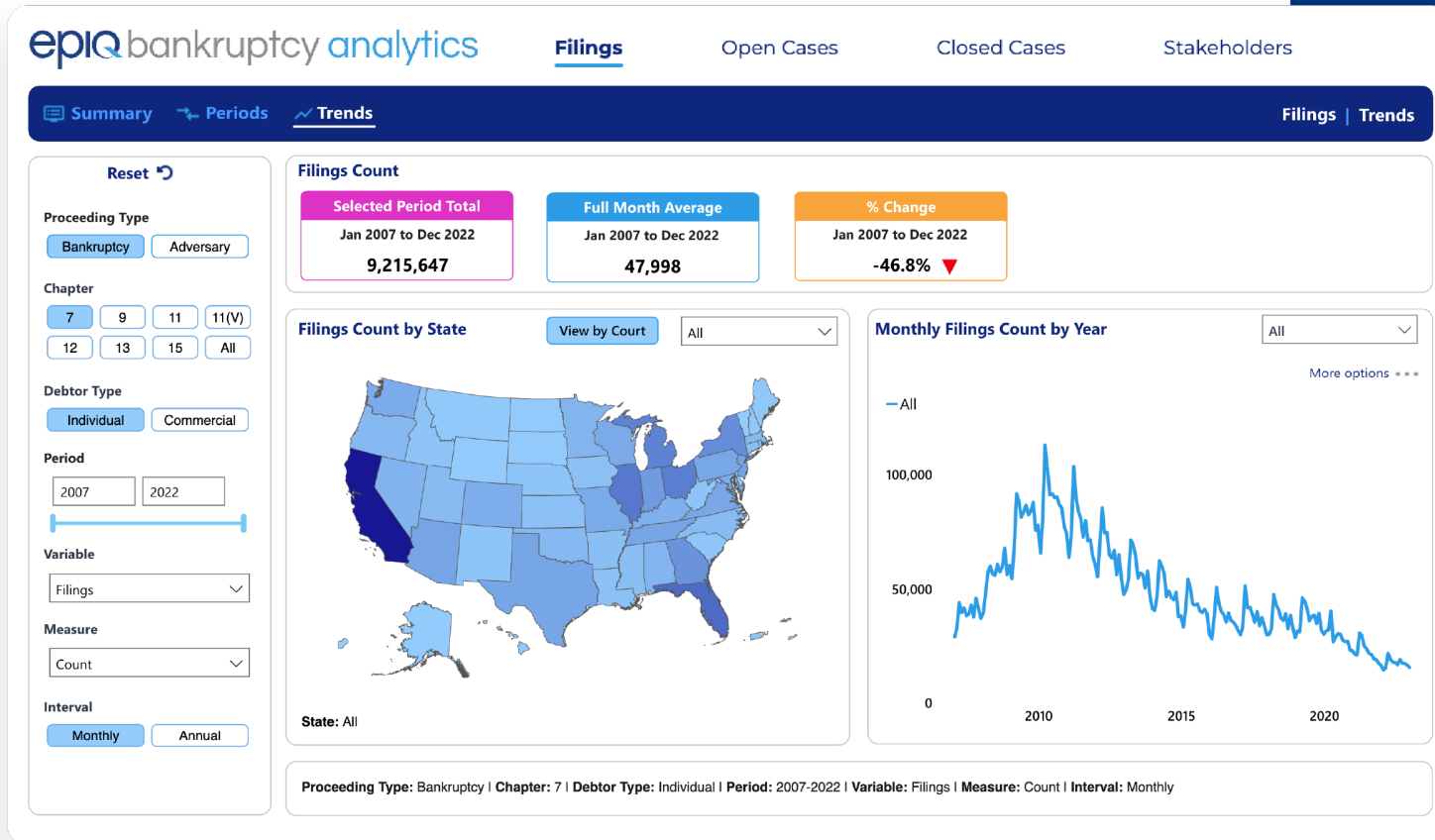
- Filings and Filers by counts and by capita
- Open case counts and by capita
- Closed case counts, durations and disposition types
- Key Stakeholders (lawyers, law firms, judges and trustees)

The easy-to-use interface enables the user to select individual or multiple chapters, states, courts and more. Various reports automatically produce graphs, charts, trends and tables.



Dashboards to Navigate the Data

Epiq Bankruptcy Analytics empowers users to visualize data their way for an intuitive and interactive user experience through modern, cloud-based dashboards.

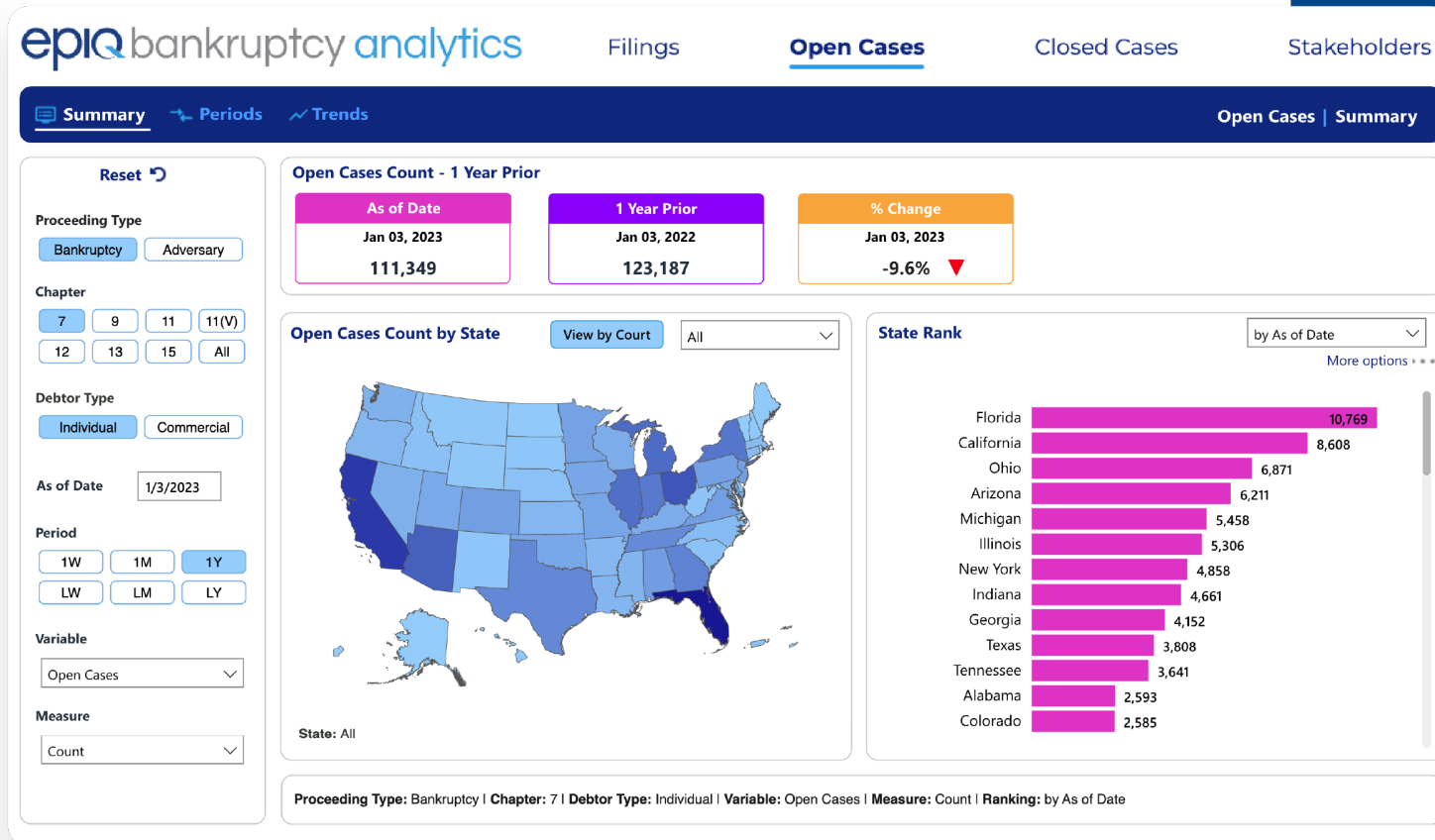


Filings Dashboard

Daily new and historical bankruptcy filings or adversarial proceeding metrics by counts and capita.

Dashboards to Navigate the Data

Epiq Bankruptcy Analytics empowers users to visualize data their way for an intuitive and interactive user experience through modern, cloud-based dashboards.

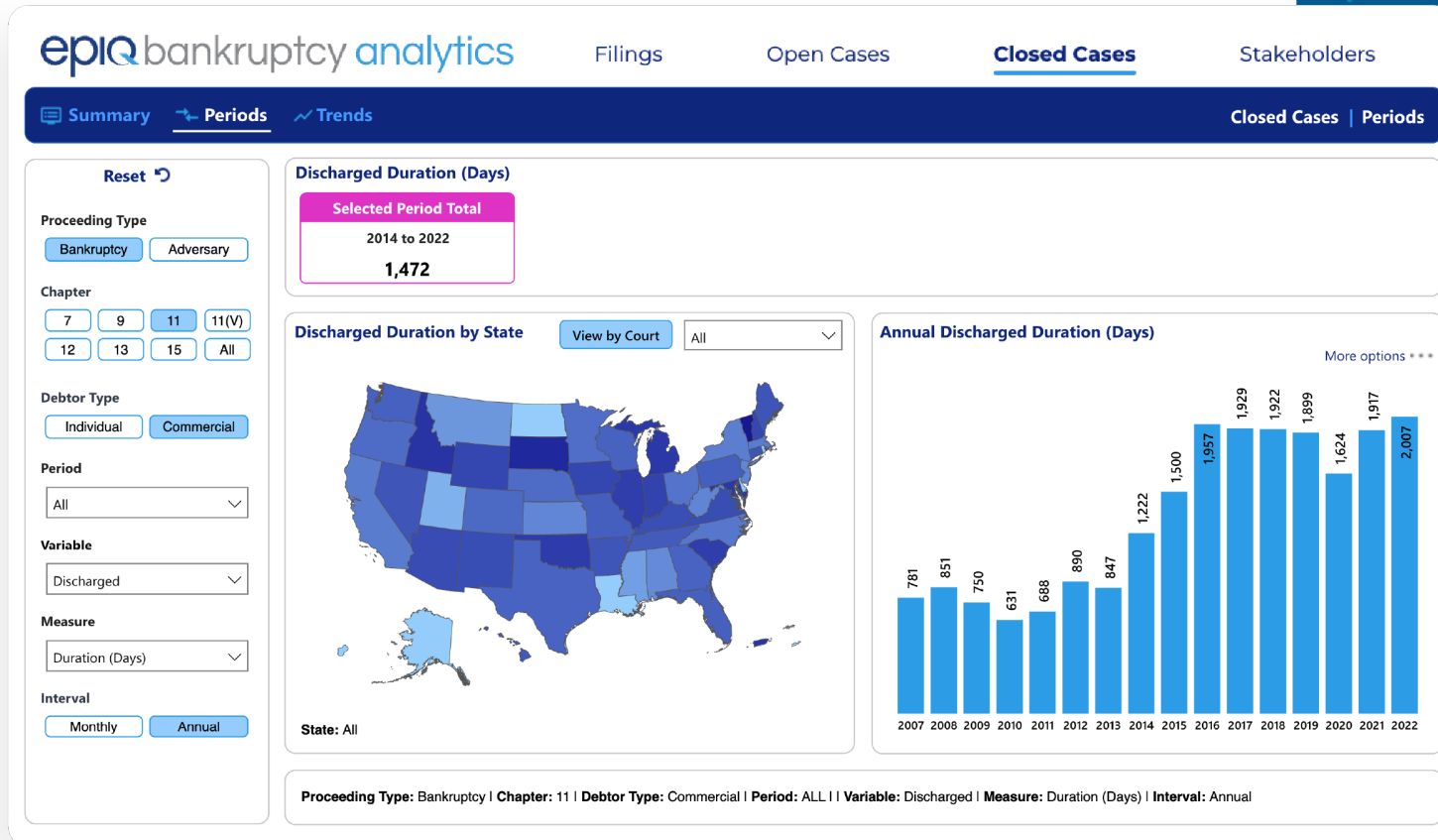


Open Cases Dashboard

Daily new and historical bankruptcy open case or adversarial proceeding metrics by counts and capita.

Dashboards to Navigate the Data

Epiq Bankruptcy Analytics empowers users to visualize data their way for an intuitive and interactive user experience through modern, cloud-based dashboards.

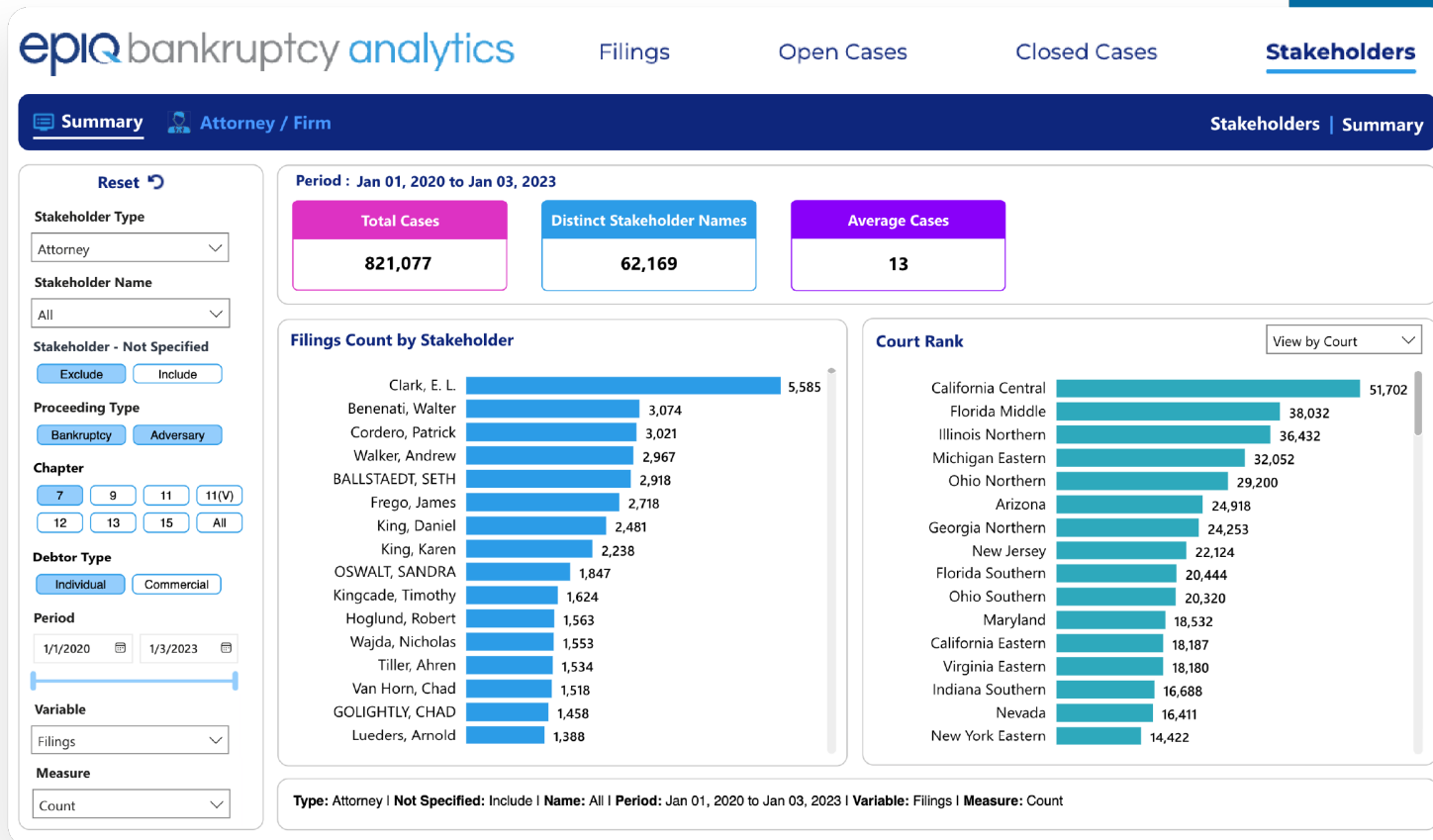


Closed Cases Dashboard

Daily new and historical bankruptcy closed case or adversarial proceeding metrics by counts, rates, durations and disposition types.

Dashboards to Navigate the Data

Epiq Bankruptcy Analytics empowers users to visualize data their way for an intuitive and interactive user experience through modern, cloud-based dashboards.



Stakeholders Dashboard

Daily new and historical counts, assignments and disposition durations by attorneys, law firms, trustees and judges

Explore Features



Epiq Bankruptcy Analytics is packed with sophisticated features for user-driven filters and advanced visualizations that allow the information to be presented in a way most meaningful to you.

Dashboard and Report View

- Filings & Filers
- Open Cases
- Closed Cases
- Stakeholders

Advanced Filtering

- Bankruptcies & Adversarial Proceedings
- All chapters
- Counts & Capita
- Disposition types
- Case durations
- Lawyers, Firms, Judges & Trustees

Geography Filtering

- Bankruptcy Courts
- All U.S. States
- D.C.
- Puerto Rico
- Virgin Islands
- Guam

Data Visualizations

- Interactive heat map
- Rankings
- Line & bar graphs
- Charts
- Trends
- Tables

Export Functionality

- Current layout
- Summarized
- Underlying data
- xlsx
- csv



bankruptcy analytics



 bankruptcy.epiqglobal.com

 1-800-671-9389

 aacersales@epiqglobal.com

About Epiq Bankruptcy

Epiq Bankruptcy is the largest provider of U.S. bankruptcy court data, technology and services and a trusted partner to lenders, servicers, trustees, attorneys, investors, and other stakeholders operating in the business of bankruptcy. Epiq Bankruptcy solutions include comprehensive corporate restructuring, trustee case management and access to the industry's most dynamic bankruptcy data and analytics.